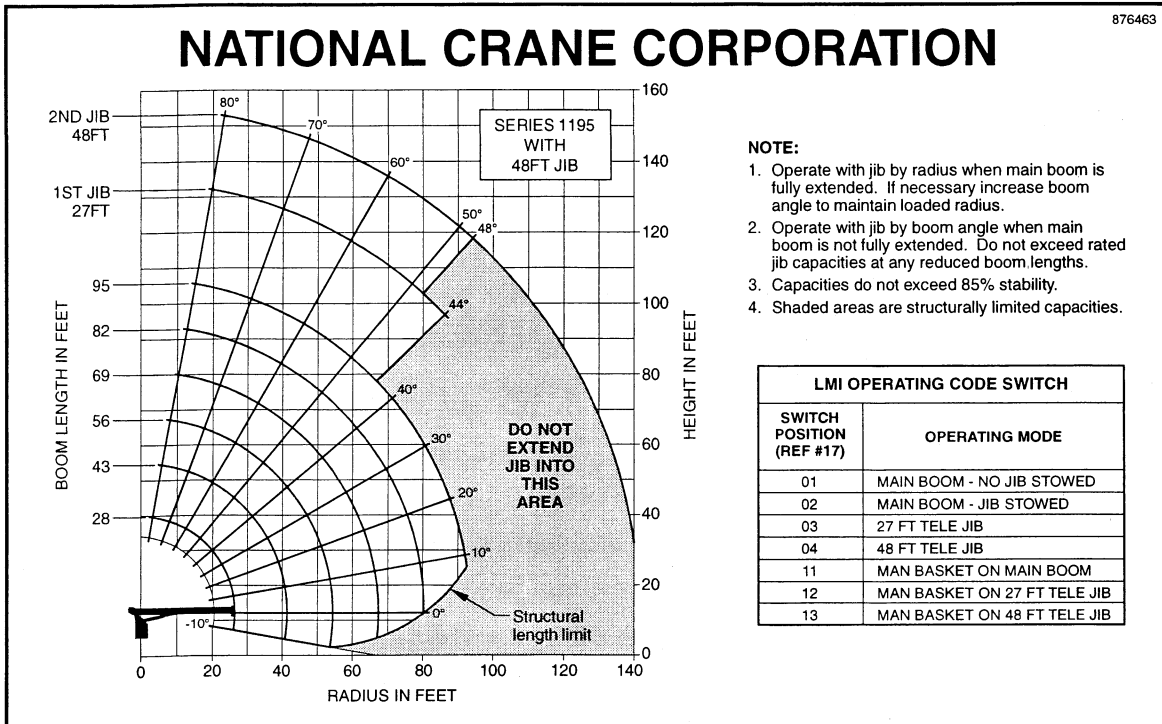


CAPACITY CHART

876463



- NOTE:**
1. Operate with jib by radius when main boom is fully extended. If necessary increase boom angle to maintain loaded radius.
 2. Operate with jib by boom angle when main boom is not fully extended. Do not exceed rated jib capacities at any reduced boom lengths.
 3. Capacities do not exceed 85% stability.
 4. Shaded areas are structurally limited capacities.

LMI OPERATING CODE SWITCH	
SWITCH POSITION (REF #17)	OPERATING MODE
01	MAIN BOOM - NO JIB STOWED
02	MAIN BOOM - JIB STOWED
03	27 FT TELE JIB
04	48 FT TELE JIB
11	MAN BASKET ON MAIN BOOM
12	MAN BASKET ON 27 FT TELE JIB
13	MAN BASKET ON 48 FT TELE JIB

LOAD RATINGS

LOAD RADIUS (FEET)	LOADED BOOM ANGLE	28FT BOOM (lb)	LOADED BOOM ANGLE	43FT BOOM (lb)	LOADED BOOM ANGLE	56FT BOOM (lb)	LOADED BOOM ANGLE	69FT BOOM (lb)	LOADED BOOM ANGLE	82FT BOOM (lb)	LOADED BOOM ANGLE	95FT BOOM (lb)
5	78.5	53,900										
8	71.5	39,700										
10	67	33,100	76	30,100								
12	62.5	28,300	73.5	25,800	78	23,700						
14	57.5	24,800	70.5	22,600	76	20,700	79	18,700				
16	52	21,800	67.5	20,000	73.5	18,400	77.5	16,700	80	14,300		
20	40	17,100	61.5	16,300	69	15,000	74	13,600	77	12,300	79	10,000
25	17.5	11,200	53	13,100	63.5	12,100	69.5	11,100	73.5	10,300	76	8,800
30			43.5	10,600	57.5	10,100	65	9,300	69.5	8,700	73	7,800
35			32	8,400	50.5	8,500	60	7,900	66	7,300	70	6,800
40			15.5	5,800	44	7,200	55	6,800	62	6,400	66.5	5,900
45					35.5	5,800	50	5,650	58	5,450	63	5,100
50					24.5	4,600	43.5	4,650	53.5	4,550	59.5	4,400
55							37	3,800	48.5	3,800	56	3,800
60							28.5	3,050	43.5	3,200	52	3,200
65							16.5	2,300	37.5	2,600	47.5	2,650
70									31	2,100	43	2,150
75									22.5	1,700	38	1,750
80											32.5	1,350
85											26	1,050
90											16.5	750
	0	5,600	0	2,500	0	1,150	0	350				
ADD TO CAPACITIES WHEN NO JIB STOWED (lb)		600		400		300		300		200		200

LOAD RADIUS (FEET)	LOADED BOOM ANGLE	27FT JIB (lb)	LOADED BOOM ANGLE	48FT JIB (lb)
30	77.5	5,200	80	3,200
35	75.5	4,800	78.5	3,050
40	73	4,350	76.5	2,850
45	70.5	3,900	74.5	2,650
50	68	3,500	72.5	2,450
55	65.5	3,050	70.5	2,300
60	62.5	2,550	68	2,150
65	60	2,100	66	2,000
70	57	1,750	64	1,850
75	53.5	1,400	61.5	1,600
80	50.5	1,100	59	1,350
85	47	800	56	1,150
90	44	600	53.5	950
95			50.5	750
100			48	600

LOADLINE EQUIPMENT DEDUCT (lb)

Downhaul weight _____ 150
 One sheave block _____ 305
 Two sheave block _____ 355
 Three sheave block _____ 575

1 PART LINE	2 PART LINE	3 PART LINE	4 PART LINE	5 PART LINE	6 PART LINE	7 PART LINE
MAX. PULL 7,700 lb	MAX. PULL 15,400 lb	MAX. PULL 23,100 lb	MAX. PULL 30,800 lb	MAX. PULL 38,500 lb	MAX. PULL 46,200 lb	MAX. PULL 53,900 lb

NOTICE

- Do not deadhead line block against boom tip when extending boom.
- Keep at least 3 wraps of loadline on drum at all times.
- Use only 9/16" diameter rotation resistant cable with 38,500 lb breaking strength on this machine.
- Maximum capacity with "burst of speed" is 3,000 lb.

* 56,000 lb load requires optional 9/16" diameter 6 x 25 IWRC cable.